



ST ANN'S SCHOOL, EALING

St Ann's School, Ealing

Education

New Build Classroom Block
and Refurbishment



St Ann's is a Special Educational Needs (SEN) secondary school for young people aged 11-19 years with complex profound to severe learning difficulties. The school specializes in supporting ASD (autistic spectrum disorders), SLD (severe learning difficulties) and PMLD (profound and multiple learning difficulties).

We were appointed to build a new two storey classroom block, including a new hydrotherapy pool and sensory theatre, and to refurbish the existing Victorian School building, built in 1901. Key elements of the programme were accelerated, making best use of the school holidays to undertake the more structural, intrusive and noisy works.

Client

London Borough of Ealing

Value

£ 3.5m

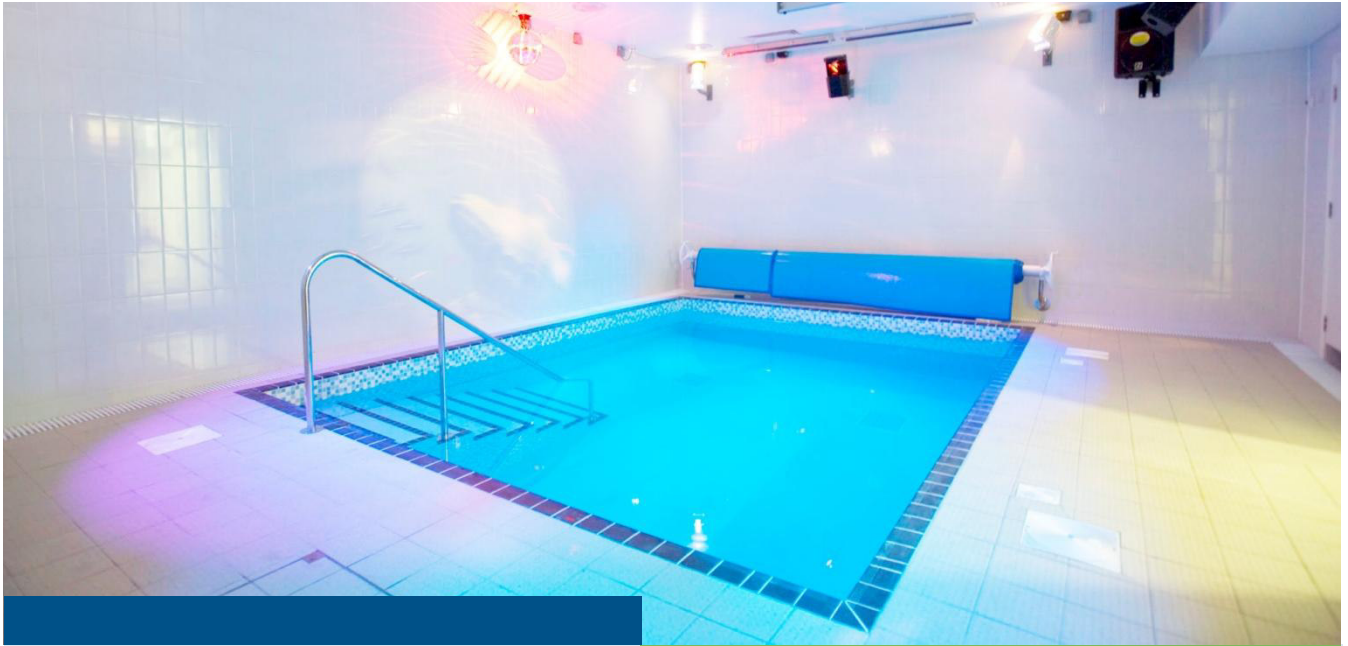
Form of Contract

JCT

Duration

80 weeks





Works included:

- ◆ New Classroom Block with 20 new classrooms
- ◆ New Sensory Theatre
- ◆ New Hydrotherapy Pool
- ◆ New kitchen, art and science rooms
- ◆ Refurbishment works for the Victorian School included 32 existing classrooms and the assembly hall.

During term time weekly planning meetings were held, with daily progress reports that ensured the children's learning environment was not compromised.



Diamond Build's Project Manager regularly participated in school assemblies, educating the children in the importance of health and safety, while demonstrating the changes made to the school premises.

The hydrotherapy pool and theatre and the other modifications were all delivered to the complete satisfaction of the school, in good time to open for the new school year. This was of particular importance to the school's senior teaching team.



ST ANN'S SCHOOL, EALING



ST ANN'S SCHOOL, EALING



ST ANN'S SCHOOL, EALING



ST ANN'S SCHOOL, EALING



ST ANN'S SCHOOL, EALING